

Sprays



new formula!

MYCODEX ALL-IN-ONE® SPRAY

- Insecticide, insect growth regulator (IGR), and repellent all-in-one spray for quick knockdown of adult fleas and ticks on dogs, cats, puppies and kittens
- Offers more than 3 weeks control of adult fleas on dogs
- Contains Nylar® (IGR) which provides over 3 months control of flea eggs

MYCODEX® SENSICARE™ FLEA & TICK SPRAY

- Kills fleas and ticks on dogs, cats, puppies and kittens
- Cleans and deodorizes while facilitating easier grooming
- Soothing water-based spray helps control fleas and ticks without irritating sensitive skin



Premise



MYCODEX® PLUS ENVIRONMENTAL CONTROL AEROSOL HOUSEHOLD SPRAY

- Breaks the flea life cycle and controls reinfestation for up to 210 days
- Kills all four stages of the flea: Adults, Eggs, Pupae and Larvae



MYCODEX® ODOR NEUTRALIZER

- Eliminates odors in pet bedding, carpets, upholstered furniture, and other areas frequented by pets

Nylar is a registered trademark of McLaughlin Gormley King Company.



Mycodex® Controls Fleas and Ticks on Dogs and Cats*



Veterinary Products Laboratories

Innovative Products in Veterinary Medicine™

P.O. Box 34820 • Phoenix, Arizona 85067-4820

1-888-241-9545 www.vpl.com

*Does not apply to all products

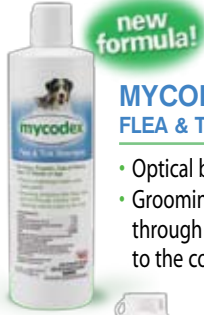
©2005, 2007, 2008 Veterinary Products Laboratories #300502282 08-0966

mycodex®

**Tough Flea & Tick Control
for Dogs and Cats***



**A Premium Line of
Shampoos and Sprays
For Dogs, Cats, Puppies, and Kittens**



MYCODEX® FLEA & TICK SHAMPOO

- Optical brighteners make white coats glisten
- Grooming shampoo kills fleas, ticks, and lice through contact while restoring natural luster to the coat



MYCODEX® PET SHAMPOO WITH 3X PYRETHRINS

- Triple strength shampoo with pyrethrins controls fleas on dogs and cats; ticks and lice on dogs
- Cleans, deodorizes, and softens coats



MYCODEX® SENSICARE™ FLEA & TICK SHAMPOO

- Soothing flea and tick control that won't irritate sensitive skin
- Cleans and deodorizes while facilitating easier grooming

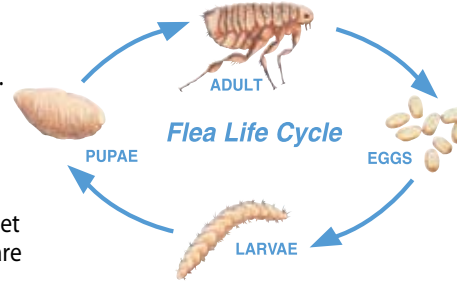


MYCODEX® PEARLESCENT GROOMING SHAMPOO

- Non-insecticidal grooming shampoo for beautiful coats
- Leaves coats soft, lustrous and manageable

FACTS ABOUT FLEAS

- Flea eggs are laid on your dog or cat, then roll off wherever your dog or cat spends most of his time... your carpeting, your pet's bed, your sofa, and other areas you may or may not be aware of.
- Over 95% of the flea population is immature – eggs, larvae, and pupae. The problem arises when they mature into adults. That's why it's important to get them when they are young.
- They spend their brief lifetime feeding on your pet's blood and then reproducing like crazy!
- One female can lay as many as 25 eggs per day, adding up to several hundred during her 6-8 week life span.
- A female flea sucks up to 30 times her weight in blood per day and excretes 6 times her weight. This blood-rich, nutrient packed feces serves as the food source for flea larvae to feed on.
- There are over 2,000 species of fleas, each with its own preferred host. When their favorite meal is not around, they'll settle for another warm-blooded body, including yours. The cat flea attacks both dogs and cats. There are dog fleas, but they are rarely found on dogs in North America.
- Cats are notorious flea smugglers. Some can carry fleas without so much as a scratch, but dogs are not so lucky. When dogs and cats share a household, they also share fleas.



THE TRUTH ABOUT TICKS

- Ticks are eight-legged, wingless parasites related to mites and spiders. Ticks do not fly or jump, they wait for a host to brush up against them.
- There are four stages to a tick's life cycle: egg, larva, nymph, and adult. The larva, nymph, and adult all suck blood.
- To feed, ticks attach themselves to warm-blooded animals and bite – they do not burrow under the skin. After feeding, the tick drops off its host, molts or lays eggs, and then waits for another host. Many tick species feed on more than one host and can transmit disease between animals and humans.
- The deer tick, known to transmit Lyme disease, is about the size of a pinhead in its nymphal stage. Adults are much smaller than the common dog tick.
- Ninety percent of all cases of Lyme disease are from nymphal-stage tick bites. This nymphal stage occurs during spring and summer.



*Does not apply to all products